



Bring every room to life

DISTRIBUTED
AUDIO SYSTEMS







Entertainment everywhere

Life doesn't just happen in the living room. Things heat up outside the kitchen. And we dine almost everywhere but the dining room. Our lives are fluid. Shouldn't we expect the same from our media?

With RTI distributed audio solutions, entertainment is always within reach. A simple touch of a handheld controller or wall-mounted touchpanel activates music anywhere in your home. Begin a CD in the kitchen and finish in your bedroom. Access your MP3s or satellite radio upstairs while family members enjoy their favorites downstairs.

But don't stop there. Extend your control to lighting, heating and cooling, home security and more. Regardless of the manufacturer, RTI solutions integrate all your electronics, to enhance your environment.





Let the music play, wherever you do

Music is essential to your life, and RTI innovations make it an integral part of your home. Summon your MP3s via personalized playlists. And listen to broadcast, internet or satellite radio at the same time. Combined with RTI handheld controllers and wall-mounted touchpanels, RTI distribution solutions keep pace with the rhythm of your life.



AD-4 Audio Distribution System

The AD-4 audio distribution system is designed to be a seamless extension of an RTI control system. The AD-4 provides the audio switching, amplification and distribution functions, while RTI central processors and user interfaces manage the audio source control, user input and status feedback. Thanks to the efficient engineering that defines the AD-4, there is no reason to limit yourself to a system that was designed only for music – with RTI, so much more is possible.

AD-4 FEATURES

- Distributes up to four analog audio sources to four zones.
- Integrated 8 channel amplifier utilizes Cool Power® technology.
- Provides 25 watts per channel in each zone.
- Accessory wall plate allows sources to be connected remotely via Cat-5.
- Discrete volume and tone control in all zones using IR or RS-232.
- Tight integration with RTI control systems allows two-way feedback.
- Optional phone and doorbell mute function.
- Compact, low-profile IU design.



AD-8 Audio Distribution System

Designed to be the audio hub for commercial and residential installations, this powerful audio and video distribution matrix switcher has the capability to route eight analog audio sources to eight different zones. For larger projects, expand the system up to 64 zones by stacking up to eight units together. Used with RTI controllers and processors the AD-8 provides complete control with two-way communication for zone-independent status feedback. Imagine every aspect of your environment working in complete harmony – from audio and video to lighting, temperature and more.

AD-8 FEATURES

- Distributes up to eight analog audio sources to eight zones.
- Integrated 16 channel amplifier utilizes Cool Power® technology.
- Provides 25 watts per channel in each zone.
- Accessory wall plate allows sources to be connected remotely via Cat-5.
- Expansion to 64 output zones by stacking AD-8 Distributed Audio Systems.
- Tight integration with RTI control systems allows two-way feedback.
- Discrete volume and tone control in all zones using IR or RS-232.
- Pre-outputs allow outboard amplification for adding rooms or speakers.
- Optional phone and doorbell mute function.



Rock the house

Keep the party going out by the pool, too. RTI amplifiers let you access all the power you need. Bring the music to every room and outdoor space, expanding the audio wherever you go. Matched with RTI controllers and processors, you have a complete solution for distributed audio. So go ahead and put RTI technology to the test. You'll find it never misses a beat.



CP-450 Amplifier

The CP-450 is designed to add more power to an audio distribution system, at a moderate price. Equipped with a 50 watt per channel Cool Power® amplifier, the CP-450 is perfect for installations using the AD-8 Audio Distribution System that require a couple extra speakers in bigger rooms or maybe adding another room to a zone. Flexible control options include IR, RS-232 or a voltage trigger input to power the unit on, while a 12VDC trigger out and IR passthrough make daisy chaining CP-450 amplifiers a breeze.

CP-450 FEATURES

- Four channel amplifier utilizes Cool Power® technology.
- 50 watts per channel.
- Expands AD-8 speaker outputs.
- Voltage trigger (3-30V AC/DC), RS-232 or IR power control.
- Rackmount or free standing installation.
- IR passthrough port.



CP-1650 Amplifier

The CP-1650 expands the capabilities of an AD-8 Audio Distribution System easily and cost effectively. The amplifier utilizes Cool Power technology to pump out an additional 50 watts per channel, doubling the output power of the AD-8. This extra power is perfect for those larger rooms that need more than two speakers and rooms or outdoor areas that get added to an existing zone. If the power needs even more boost, you can bridge two channels with a simple flip of a switch, for a whopping 100 watts per channel...the house will be rockin'.

CP-1650 FEATURES

- 16 channel amplifier utilizes Cool Power® technology.
- 50 watts per channel.
- Audio input level adjustment on each channel.
- Bridgeable audio outputs for increased power.
- Expands AD-8 speaker outputs.
- Voltage trigger (3-30V AC/DC), RS-232 or IR power control.
- Rackmount or free standing installation.



Hear what you've been missing

Enjoy your music collection wherever you desire. The RTiDock allows you the flexibility to listen to your music from any room in your home. Now you can start that album in the exercise room, and finish it in the bathroom, or have a party and listen to it in every room...all with a simple press of a button. Start accessing your entertainment when – and where – your lifestyle takes you.



RTiDock

The RTiDock features a host of benefits not found on other iPod® docks, such as rack-mount or desktop options, and the ability to sync with iTunes over the network using VirtualSync technology. For simple, intuitive operation, the device offers a full on-screen GUI (Graphical User Interface) and video output for navigation through a television. A sliding tray provides easy access and discreet storage of the iPod for added reliability and a clean design.

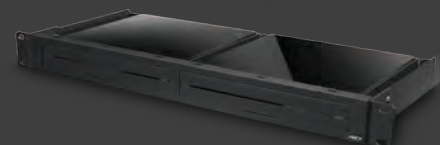
The RTiDock offers seamless integration with RTI control devices to access all transport functions of the iPod through full IR support. For more robust control to navigate through artists, songs, albums, and playlists, the device also allows bi-directional communication over RS-232 or IP with many RTI handheld and in-wall controllers.

RTiDock FEATURES

- On-screen interface (GUI) for navigation of music on a TV display.
- Sliding tray provides a clean look and improved reliability.
- VirtualSync technology allows synchronizing with iTunes over the network.
- Compatible with iPod Classic®, iPod Nano®, iPod Touch®.
- Analog and digital audio output connectors.
- Built-in IR receiver and 3.5mm mini-jack for IR control.
- Supports, IR/RS-232/Ethernet control.
- Blue LED base emits a cool glow.
- Slim design allows rack mounting, or may be used free standing



iPod remains hidden away in the drawer.



Optional rack mount kit has space for two RTiDocks.

Total control



	Power	Display Type	Display Size	Display Resolution	Touch-screen	Hard Buttons	RF Frequency	Ethernet Enabled
T1-B	Lithium Ion battery w/charging cradle					40	433MHz	
M2	4 AAA batteries	Monochrome LCD	.94" w x 2.1" h	64w x 128h		33	433MHz	
T2-B	Lithium Ion battery w/charging cradle	Monochrome LCD	1.3" w x 2.4" h	64w x 128h	Yes	37	433MHz	
T2-Cs+	Lithium Ion battery w/charging cradle	Color LCD	2.4"	240w x 320h	Yes	35	433MHz and 2.4 GHz	
T2-C+	Lithium Ion battery w/charging cradle	Color OLED	2.8"	240w x 320h	Yes	36	433MHz and 2.4 GHz	
T3-V+	Lithium Polymer battery w/charging cradle	Color LCD	3.5"	480w x 640h	Yes	21	433MHz and 2.4 GHz	Yes
T4	Lithium Polymer battery w/charging cradle	Color LCD	6.4"	640w x 480h	Yes	13	433MHz or 2.4 GHz	Yes
U1	4 AAA batteries					12		
U2	4 AAA batteries	Monochrome LCD	.94" w x 2.1" h	64w x 128h		33		
RKM-1	9-16V DC					9		
RK1 -2,4,8	9-16V DC					2, 4, 8		
RK2	9-16V DC	Monochrome LCD	1.3" w x 2.4" h	64w x 128h	Yes	7		
RK3-V	9-16V DC	Color LCD	3.5"	480w x 640h	Yes	9		Yes
K4	9-16V DC	Color LCD	6.4"	640w x 480h	Yes	0		Yes
RK10	24V DC	Color LCD	10.2"	1024w x 600h	Yes	0		Yes



RP-1

A low-cost programmable control processor designed to automate the operation of audio/video and other electronic systems, the RP-1 combines many of the capabilities of RTI's ZRP-6 Remote Control Processor with an integrated RF receiver and includes a five port IR connecting block. It's the perfect control system for single-room installations such as home theaters, media centers and bedrooms.



XP-3

The XP-3 is a powerful control processor designed to automate and enhance the operation of electronics in smaller scale installations. A remarkable value with an impressive feature set – the XP-3 comes equipped with a built-in ZigBee® transceiver for bi-directional communication with compatible RTI controllers, a multi-tasking operating system and an astronomical clock for time based events.



XP-6

The XP-6 raises the level of automation and control of any electronics system. The XP-6 is loaded with features to provide sophisticated control with built-in IR routing, relay control, sense inputs, Ethernet, two-way RS-232 communication and support for ZigBee® wireless communication.

XP-8

Capable of automating the operation of electronic systems for entire buildings, the XP-8 marshals the power of a blazingly fast MPU and a real time/multitasking operating system. An abundance of control ports offer tremendous

expandability while cutting edge communication options such as two-way RS-232 and Ethernet, take the level of control to new heights. Like other RTI processors, the XP-8 interfaces seamlessly with all RTI handheld and in-wall controllers.





RKM-1



RK1- 2, 4, 8



RK2



RK3-V



K4



RK10

MJPEG Camera Viewing	Dimensions (L x W x D) (In-walls with bezel)	Cutout Dimensions (H x W)	Faceplate Colors	Bezel Colors																
	10" x 1.9" x .9" (254mm x 48mm x 23mm)		Black	<table border="1"> <tr> <th>FACEPLATE COLORS</th> <th>BEZEL COLORS</th> </tr> <tr> <td>White</td> <td>White</td> </tr> <tr> <td>Blue</td> <td>Almond</td> </tr> <tr> <td>Silver</td> <td>Ivory</td> </tr> <tr> <td>Dark Silver</td> <td>Silver</td> </tr> <tr> <td>Metallic Gray</td> <td>Brushed Aluminum</td> </tr> <tr> <td>Dark Metallic Gray</td> <td>Black</td> </tr> <tr> <td>Black</td> <td>Black Anodized</td> </tr> </table>	FACEPLATE COLORS	BEZEL COLORS	White	White	Blue	Almond	Silver	Ivory	Dark Silver	Silver	Metallic Gray	Brushed Aluminum	Dark Metallic Gray	Black	Black	Black Anodized
FACEPLATE COLORS	BEZEL COLORS																			
White	White																			
Blue	Almond																			
Silver	Ivory																			
Dark Silver	Silver																			
Metallic Gray	Brushed Aluminum																			
Dark Metallic Gray	Black																			
Black	Black Anodized																			
	9.1" x 2.4" x 1" (251mm x 64mm x 25mm)		Black																	
	9.75" x 2.5" x 1" (248mm x 64mm x 25mm)		Black																	
	9.75" x 2.5" x 1" (248mm x 64mm x 25mm)		Black																	
	10" x 2.6" x 1" (254mm x 66mm x 25mm)		Black																	
Yes	7.75" x 3" x 1" (196mm x 76mm x 25mm)		Black																	
Yes	6.2" x 9.4" x 2.6" (157mm x 239mm x 66mm)		Black																	
	5.9" x 2.3" x 1.2" (150mm x 59mm x 30mm)		Blue																	
	9.1" x 2.75" x 1" (251mm x 70mm x 28mm)		Blue																	
	Standard Decora® wallplates	Single gang box	White, Black	Standard Decora® wallplates																
	Standard Decora® wallplates	Single gang box	White, Gray, Black	Standard Decora® wallplates																
	5.13" x 4.6" (130mm x 117mm)	4.5" x 4" (117mm x 102mm)	White, Gray, Black	White, Almond, Ivory, Silver, Black, Brushed Aluminum																
Yes	5.75" x 5.4" (146mm x 137mm)	5.13" x 4.75" (130mm x 120mm)	White, Black (Satin or Gloss)	White, Almond, Ivory, Silver, Black, Brushed Aluminum																
Yes	6.25" x 8.75" (159mm x 222mm)	5.5" x 8.25" (140mm x 210mm)		White, Almond, Ivory, Silver, Black, Brushed Aluminum																
Yes	8.75" x 12.25" (222mm x 311mm)	8.0" x 11.1" (203mm x 282mm)		White, Black (Satin or Gloss)																

All features and specifications subject to change without notice.



RTiPanel App

The RTiPanel app is a perfect example of the convergence of today's electronics. The RTiPanel offers the same intuitive control experience RTI remote controls offer, running on the Apple iPad®, iPod Touch® and iPhone®. Providing secure local or remote access to an RTI XP series control processor from any Internet connection, the RTiPanel allows for LAN control via Wi-Fi and WAN control off site. Users can view and adjust thermostats, monitor security systems and turn off lights, in addition to controlling their A/V electronics, from the office, on vacation, or almost anywhere in between.



Virtual Panel App

At work, on vacation, or anywhere with an internet connection, Virtual Panel offers the same intuitive control experience as RTI remote controls right on their desktop and laptop PCs running Microsoft Windows®. Providing secure local or remote access to an RTI system from any Internet connection, the Virtual Panel app allows for LAN control and WAN control off site.

It's Under Control®

A pioneer in the development of affordable, customizable control systems for home, business and transportation, RTI combines industry-leading innovation with an obsessive commitment to design excellence. We believe in continuous product improvement and devote extraordinary resources to advancing usability, durability and reliability. The most important measure of success, however, is the enjoyment that our products provide to all who count on RTI for robust power and intuitive operation in electronic control systems.



RTI controllers and remotes have been singled out by industry and media alike for advanced technology, superior ergonomics and intuitive operation.

RTI products are sold through a network of trained dealers and professional system integrators. RTI does not sell directly to the public. To locate a qualified dealer, visit www.rticorp.com or call us today at 952.253.3100.

5775 12TH AVE EAST
SUITE 180
SHAKOPEE MN 55379
952-253-3100
RTICORP.COM

